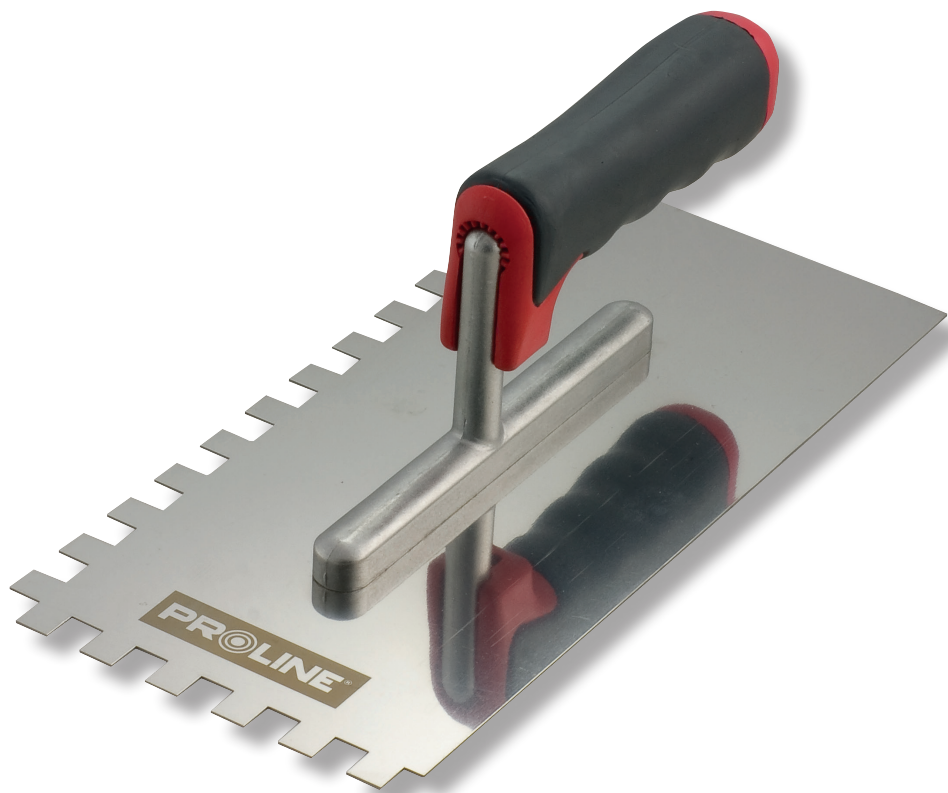


CONSTRUCTION, METALWORK,
CARPENTRY, AND MEASURING
TOOLS


TEETH STAINLESS FLOAT



PRODUCT FEATURES

Two-component plastic handle. Aluminum support.

STAINLESS

CODE	DIMENSIONS [MM]	TOOTH [MM]	
61511	270 x 130	4 x 4	40
61512	270 x 130	6 x 6	40
61513	270 x 130	8 x 8	40
61514	270 x 130	10 x 10	40
61515	270 x 130	12 x 12	40

PROLINE®

 <https://pl-pl.facebook.com/ProlineTools>
www.proline-tools.com